

FREE !!

Autumn 2013

ISSUE No.55

Cornard News



Cornard Wood 1748 National Gallery

GAINSBOROUGH COUNTRY

Over 10 years ago I wrote an article, on the front page of this Newsletter, extolling the beauty of Gainsborough Country - our local landscape.

I and many others are passionate about preserving this local asset. Now, after a long and strenuous fight, things are coming to a head regarding the 170 house development east of Carsons Drive.

Persimmon Homes, whose planning application was turned down by Babergh, are appealing the decision. Babergh said that the plans were poorly designed and inadequate in dealing with the inherent design constraints attached to the site.

Babergh are committed to putting up a robust defence of their position but ultimately the outcome rests on the subjective decision of the Planning Inspector, who acts like a judge in planning matters.

We say that just because the land has been allocated for up to 170 houses, there is no automatic justification in plonking down a bog standard development crammed into what is a premier location next to a Special Landscape Area and in the setting of a Grade 1 listed building.

I hope the Inspector rejects this appeal and Persimmon come back with a development designed to be more in harmony with Great Cornard's legacy.

LONG LIVE GAINSBOROUGH COUNTRY

Contact details:

Michael Evans - Editor Cornard News
c/o Council Offices, The Stevenson Centre,
Stevenson Approach, Gt. Cornard
Sudbury, Suffolk, CO10 0WD
Tel: (01787) 373212

In this issue:

Films
Cookies
Trains

Next issue - December 2013
Copy date - November 2013

GREAT CORNARD PARISH COUNCIL NEWS



May. After again appointing Councillor Mick Cornish as Chairman of the Council and Councillor Mrs Pam White as Vice-Chairman, it was agreed that the membership of the Council's committees should remain the same for the next year. Councillors were also appointed as the Council's representatives on outside bodies for the coming year.

Councillor Jackson reported that building work was about to be started in the new health facility. This work should take eighteen months and was expected to be completed by autumn 2014. The Chairman had attended a meeting of the NHS Local Liaison Forum and reported that developments on all the NHS sites were moving forward.

Councillor Bavington, in his role as District Councillor, reported that Babergh District Council had elected Jennie Jenkins to the role of Leader of the Council which should enable the council to interact more easily with other district councils. He also reported that transformation reviews were currently being undertaken in preparation for the 2014 budget. As Babergh Council was due to receive less money again from the government, the council would need to look at ways to increase income in areas that it currently does not. It was hoped that schemes to promote economic growth would be achieved and this would in turn increase income.

June. The Cornard sector police report was distributed and noted. PC Goldfinch advised councillors that to combat the recent spate of criminal damage in Hartest Way, police patrols had been increased to try and deter and catch the offenders. The police had also arranged for the streetlights to be left on overnight.

Councillors received news of a further public consultation regarding amendments to the Babergh Core Strategy and it was agreed that the Council's committee should meet to review the modifications and respond on behalf of the parish council.

It was agreed to grant aid the Great Cornard Community Association the sum of £500 towards the cost of the fete in June.

July. At an extraordinary meeting of the Parish Council, Shawlands Wood was formally declared a local nature reserve and the Chairman and Vice Chairman of the Parish Council executed the Deed on behalf of the Council.

On 31st July, His Royal Highness the Duke of Kent officially opened Applegate Mews in Poplar Road, Great Cornard and the Chairman and other councillors attended the ceremony.

Frances Jackson Councillor

LIGHT CORNER

Wife: Do you want dinner?
Husband: Sure, what are my choices?
Wife: Yes and no.



The longest sentence known to man: "I do"

Sign on a Plumber's truck: "We repair what your husband fixed."



GREAT CORNARD TOWN LAND CHARITY

Will you be a first year university or college student whose home address must be in Great Cornard?

If so, you will probably be eligible for a grant towards your course books etc.

Apply in writing to: **The Clerk, 4 Church Road, Great Cornard, Sudbury, Suffolk CO10 0EL**

The Great Cornard Community Association
Connecting the Community

QUIZ NIGHT 21st September 7.30 PM
at the Rugby Club

TABLE & JUMBLE SALES on Saturday
19th October 2013
14th December 2013
and
8th February 2014

**STEVENSON CENTRE, BROOM STREET
GT CORNARD CO10 0WD
1.00PM TILL 3.30PM**

20p ENTRY (Goes to FETE FUND)
FUNDRAISING @ THIS EVENT **SESAW** plus others
In the event of spaces not filled by fundraisers
private sellers will be offered the space

IF YOU WOULD LIKE TO TAKE PART IN FUTURE GROUP EVENTS
PLEASE CONTACT US: GCCA C/O STEVENSON CENTRE
Tel 07941173936

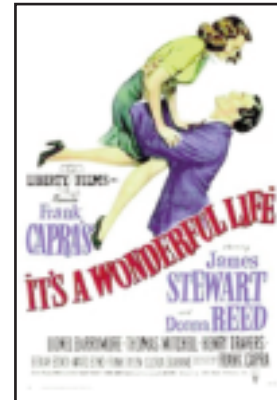
Dates for your diary:

Upcoming events:



Friday 6th September 6pm -
Saturday 14th September 3pm -
Saturday 28th September 6pm -
Sunday 29th September 10am -
Saturday 5th October 3pm -
Saturday 30th November 6.30pm -
Saturday 21st Dec 3pm -

Film: Lion King Sing along
Film: The Hobbit
Harvest Supper
Harvest Festival with guest speaker!
Film: Les Miserables
Quiz Night
Film: It's a Wonderful Life



FAMILY MOSAIC – LINDSEY COURT 9TH SEPTEMBER 2013

Opening of our New Play Area together with a Liaison Lunch celebrating our reaching a decade.

We would be very pleased if you could join us from 12 noon onwards.

Family Mosaic-Lindsey Court provides accommodation and support for young parents and 'soon to be' parents. Staff are available to help and advise young parents with any childcare, financial or personal issues. The staff team works to make the project a pleasant and secure community in which to live.

Bright Horizons Foundation for Children have kindly provided funding and indeed carried out the work necessary to revamp our garden and play area. We are truly delighted with their achievements and know this will greatly enhance the children's stay at Lindsey Court.

The aim of our project is to help the tenants be competent parents, develop the skills that enable them to move on into independent accommodation and maintain a tenancy. Please come along and check us out, our wonderful new play areas and find out more about us. If you are familiar with our work here at Lindsey Court, please do take the opportunity to pop in and catch up.

**RSVP Cheryle.wilkin@familymosaic.co.uk or
01787 881904** Lindsey Court, Sycamore Road,
Great Cornard, Sudbury, Suffolk CO10 0JZ

BUT YOU DON'T LOOK ILL

Cheerful support for hidden illnesses
Come and join our cheerful, chatty meeting!

Thursday 12th September. Drop in 1 - 3 pm
Stevenson Centre, Great Cornard CO10 0WD
£1 inc tea/coffee. please bring your own mug
07950 436584 bydlisuffolk@gmail.com

QUIZ (answers page 8)

Work out the connection between the five answers.

1. The lotus flower is the symbol of which country?
2. William D Coolidge was a pioneer of what medical procedure?
3. In which sport do players compete for the Harry Vardon trophy?
4. What name is given to a bet with 4 selections and comprising 6 doubles, 4 trebles and a four-fold?
5. What is the first name of the Beckhams' second child?



IPSWICH TOWN SUPPORTERS CLUB (LONG MELFORD BRANCH)

Do you travel to Portman Road to attend the Ipswich Town football matches, if so why not travel with us? We provide a coach to all home games, with pick up points in Long Melford, Sudbury, Great Cornard and Boxford. The coach drops you off in Sir Alf Ramsey Way and picks you up there after the game, so no long walks to and from the ground or finding somewhere to park. Fare £5.50 and £6.00. If you require any further information please contact **Alma on 01787 375549** or e-mail alma.beckwith@btopenworld.com

COULD YOU BE A FRIEND TO SUFFOLK'S CHURCHES?



Are you someone who values the church building which has been part of your community for generations? Many such buildings are under threat from crumbling plaster, rising damp, failing pipes, tottering towers or the dreaded Death Watch Beetle. Your church might currently be in the fortunate situation where all is well – but in the future it could be your community that needs help from the Suffolk Historic Churches Trust.

In 2013 we are celebrating our 40th Anniversary and since 1973 we have given out grants, totalling more than £3 million, to help restore and preserve churches of all denominations. These grants have been a lifeline to struggling fund-raisers. The money comes from the annual sponsored church bike ride in September, from legacies and donations, but also from the subscriptions of the Friends of the Suffolk Historic Churches Trust.

In return for a minimum annual donation of £15 per person Friends are invited to an annual dinner, study days and other events. They also receive twice yearly newsletters about the work of the Trust in Suffolk.

Please become a Friend of the Suffolk Historic Churches Trust – your church could be the one that needs help in the future.

Martin Favell Chairman,
Suffolk Historic Churches Trust www.shct.org.uk
office telephone: 01787 883884

FESTIVAL OF REMEMBRANCE



There will be a **Festival of Remembrance** held in the Auditorium of the **Ormiston Academy Sudbury** in conjunction with **The Royal British Legion Sudbury & District Branch** on Tuesday 22nd October 2013 at 7.00 p.m.

The event will take the form of entertainment by Students and Members of the Branch for the first half of the evening followed by a Drumhead Service to be held after the interval for refreshments.

Tickets £5 (to include refreshments) and all proceeds will be for the Poppy Appeal. **For tickets and details contact Rod Kilby on 01787 374277.**

PAT'S DAYZ OWT.



I have some tickets left for **Wednesday 20th November 2013** for Thursford Christmas Spectacular, and still some vacancies for other day trips each month.

Also we are planning to do a "Turkey and Tinsel" 5 day holiday to Torquay, **24th - 28th November 2014**, staying at the Rainbow International Hotel, dinner, bed and breakfast, evening entertainment, and daily excursions whilst there, all in for £190, with **NO SINGLE SUPPLEMENT.**

Would you be interested? - If so, just let me know please at this stage. This holiday is like Christmas and New Year come early, but at about a third of the price charged at the proper time.

At the moment just trying to find out how many would be interested. I know it is a long way off, but you have to plan early to get the hotel rooms.

If you would like a copy of **2014** day trips once completed, also please let me know.

Pat Bennett

Ring me on **01787 310982**, afternoons or evenings preferred, including weekends.
or e mail Patron2209@aol.com

Sudbury Chimney Specialists
 Multifuel / Wood Stoves
 Liners Suppliers & Installers
 All Chimney & Fireplace
 Work Undertaken
 Chimney Sweeping Service

01787 376131

www.sudbury-chimneys.co.uk

Fully Insured
 Free Estimates
 HETAS Registered

R. W. Spencer & Son Ltd Builders
 UNDECIDED ABOUT HOME EXTENSIONS?
 Look no further!!
 Very competitive rates
 Qualified tradesmen
 Free estimates

N4BC

THE ONLY CALL YOU NEED TO MAKE

01787 461249 / 460021 Mobile 07976 671474

Merryfields, Nether Hill, Gestingthorpe, Halstead, Essex CO9 3BD

FEMME CARS PRIVATE HIRE TAXI SERVICE
 NOT JUST FOR GIRLS!

AIRPORT TRANSFERS
 EXECUTIVE TRAVEL
 COURIER SERVICES
 WEDDING RELAYS
 SCHOOL TRANSPORT
 WHEELCHAIR VEHICLES
 PASSENGER ASSISTANCE
 SUFFOLK TRAVEL VOUCHERS ACCEPTED



PHONE: 01787 377585 MOBILE:07779752782
 Email: bookings@femmecars.com www.femmecars.com

frank matthews UPHOLSTERY
 RE-UPHOLSTERY, RENOVATIONS
 AND ANTIQUE RESTORATIONS
 ALL UPHOLSTERY WORK UNDERTAKEN
 FREE ESTIMATES
 Phone FRANK on (01787) 311133


LOCAL ELECTRICIAN
 Eric Hodgson 01787 229 179
 Mobile 07786 643 044
 Free Quotes - Friendly Service



3 Bridge Street Bures CO8 5AD

D.S. ELECTRICAL
 FULLY QUALIFIED ELECTRICIANS

David Skews
 Tel: 01787 370626
 Mobile: 07956 325676



ALL TYPES OF WORK UNDERTAKEN AND GUARANTEED

PAUL PLEASANTS
 The Fun Starts Here
ENTERTAINMENT
 Entertainer
 Magic Shows, Punch & Judy Shows
 Circus Skills, Childrens Discos, Close Up magic
 Balloons, Live Music, Music Composer
 01787370825
 paulmagic19@btinternet.com
 CRB Checked, Full Equity Member, PRS



AGHS Ltd
 Gas & Oil Central Heating Engineers




219982 C8833

All Domestic Gas Appliances-Installed, Repaired & Serviced
 Boilers, Fires, Cookers, Water Heaters & Cylinders

Powerflushing - Landlords Safety Certificates - Free Quotes
 Tel: **01787 375600**

Boxstore
 Self Storage at Boxford
 For all domestic and business needs
 See website for details
www.boxstore.co.uk
 or phone **01787 210350**

Solicitors
 27 Friars Street, Sudbury
 Suffolk CO10 2AD
 Tel: 01787 880440 Fax: 01787 880488
 e-mail: solicitors@bateswells-sudbury.co.uk

Bates Wells & Braithwaite
 Property - Business Affairs - Employment
 Consumer Contract Disputes - Debt Recovery
 Compensation Claims - Criminal Matters - Child Care
 Wills Trusts - Family (including Injunctions)

Expert help available locally.

Sudbury Learning Centre

- IT Training
- Advice & Guidance
- Training for the Unemployed
- CV Writing & Interview Skills
- Improve your English & Maths
- Staff training for local businesses



IN SUDBURY

Call for a brochure or more details at
 18 - 20 Cornard Road, Sudbury
 or Tel: **01787 880619**

DLDS

Building Plans Prepared For:
 Alterations, Extensions & New Build
 Residential & Commercial Projects
 Planning Applications & Building Regulations
 Specifications & Tender Documents
 All CAD Drawings



Contact David Lambert on
 01787 281822 or
 07967 611105
dlds@dldesignservices.net

www.dldesignservices.net

J. M. WADE
PROPERTY MAINTENANCE
 Fitted Kitchens, Painting/Decorating, Carpentry
 Tiling, Fences, Patios, Driveways, Laminate Flooring
 Call **Julian**
 Tel: **01787 881718** Mobile: **07855 843185**
 or email: julianwade@fsmail.net - Trading for 10 years

L J Snow

Plumbing & Heating Engineer
 Tel: **01787 313006**
 
The Real Snowman

BOB MILLINGTON ROOFING
 FLAT ROOFING SPECIALIST
FREE ESTIMATES
 TEL or FAX: **01787 883123**

THE DAIRY STORES - SPAR
 BROOM STREET, GREAT CORNARD
 Tel: **01787 373042**
 YOUR LOCAL CONVENIENCE STORE
OPEN 8.00AM - 10.00PM

The Ardmore Veterinary Group

 Modern well equipped practice 24 hour local emergency cover
 An experienced caring professional service for all domestic animals
 Puppy parties, behavioural and health counselling.
 Home visits by appointment.
57 Cornard Road, Sudbury. CO10 2XB
Telephone 01787 372588
www.ardmorevets.co.uk

Needlepoint Designs Ltd.
 (Formerly The Schoolwear Shop)
www.needlepoint.co.uk

- **SCHOOL UNIFORMS**
 Official and Unofficial
- **COMMERCIAL EMBROIDERY**
 On our garments or your own
- **DIGITIZATION** - Designs & Corporate Logos
- **WORKWEAR TO ORDER**
 Official and Unofficial
- **BROWNIES, BEAVERS, CUBS, SCOUTS & EXPLORERS UNIFORMS**

sales@needlepoint.co.uk
17 GAOL LANE, SUDBURY
01787 882341


Ryan Howard Tel/Fax: **01787 373763**
 ROOFING CONTRACTORS & LEADWORK SPECIALISTS Mob: **07968 403468**
Professional Re-roofing to any style property from Period & Listed to Modern Day
 All New Build, Extension & Conservation Work Undertaken
 Leadwork, Flat Roofing & Extensive Repair work
 Website - www.ryanhowardroofing.co.uk

Paint Force Will Hunt
 Interior and Exterior Painting
 City and Guilds Trained Decorator
 Fully Insured - No Job to small
CALL TODAY FOR A FREE QUOTE
 20% off for Cornard Residents
01787 310952 - 07968 622 285


English Apples and Pears
 We have over twenty varieties including **COX, BRAMLEY** and **EGREMONT RUSSET.**
WHELDON'S FRUIT FARM
 If you wish to order: **07901 650466**
 For details & availability: **01787 374322**
 Open 7 days 10a.m. - 5p.m.
 Signed off A134 between Newton Green & Sudbury

VULCAN BATTERIES
THE BATTERY SPECIALIST
 TOP QUALITY HEAVY DUTY BATTERIES FOR:
CARS, TRUCKS, AGRICULTURE, INDUSTRIAL PLANT, MOTORBIKES, WHEELCHAIRS, LEISURE & MARINE
01787 881299
2 THE DRIFT, GT. CORNARD, SUDBURY, SUFFOLK



September. Will it be a warm one or a wet one? There's no predicting it these days it would seem – the weather pattern has seemed so very random over the last few years. We get conflicting reports in the media about whether this is just the normal cycle of things which we've had for years or whether it's climate change as the world gets hotter. I don't want to wade in on the argument as I'm not qualified to do so. All I observe is that the weather pattern has felt different.

What I do know is that we are all tasked with looking after this world which has been given us by God. Whether through miraculous creation or the process of billions of years, our world is a gift and we are called to be good stewards of it and its resources – be they plant or animal life, mineral or chemical deposits. The Bible doesn't get bogged down in the hows of creation; it is more concerned with the why.

The beginning of the Bible, the book of Genesis, reads as a wonderful poem of creation purpose – this world is not random, it has been created for us, our perfect habitation – life isn't simply the random mutation of a load of primordial ooze, but is the culmination and pinnacle of work by a Creator God who loves his creation and provides for it. Genesis offers an insight into the plan and purpose of creation as something beautiful, to provide for us and all life and we, humankind, are given the task of stewarding it – of caring for it, of tending it. In this way God gives us the world to provide for all our needs, that through caring for it, we can care for, provide for and love each other. The world doesn't belong to any one of us, it belongs to all and was given to provide for all. We were placed in the world as stewards, not owners.

I wonder how we do at that task?

On the 29th September at 10am in St Andrew's we're going to be celebrating Harvest – celebrating all that God has given us and giving something back in terms of support for Storehouse – the local food bank – sharing our plenty with those who have little and none (non-perishables only please). In a small way, we'll be trying to recognise and challenge one another in that task of caring for our world and our fellow inhabitants in the way we live out our lives.

It also happens to be Back to Church Sunday – what better time to give thanks to God for all the good things in this world and to pray for the many needs we have. We'll also be joined by some special visitors from a certain Land of the Long White Cloud.....

However you celebrate Harvest; whether in church, or by buying produce in season; whether by going fairtrade (and yes I think we do have a responsibility to help others through fair trade) or by changing all your light bulbs to economy ones – I pray that you will recognise the gift which has been given us in the form of our world and all its wonders and our responsibility in caring for it.

Many blessings,

A handwritten signature in cursive script that reads 'Chris'.

Chris Ramsey

Vicar

What's On in Great Cornard

Key to venues

BL	Blackhouse Lane Sports Ground	RST	River Stour Trust Visitor Centre, Dove Meadow
GCMS	Great Cornard Middle School	SC	Stevenson Centre, Broom Street
GCSC	Great Cornard Sports Centre, Head Lane	SRC	Sudbury Rugby Club, Spicer's Way
OVH	Old Village Hall, Bures Road	WHOS	Wells Hall Old School, Head Lane

Youth Clubs

Scouts (10-14yrs)	Mon	19:00-20:00	OVH	T: Stuart 371268
2nd Great Cornard Brownies	Mon	18:00-19:30	WHOS	T: T.B.C
Amp & Deck, Music Practice	Tues	18:30-21:00	WHOS	T: 07960 558678
Kung Fu - Tough Tigers	Tues	18:15-19:15	SRC	T: 07815 412338
F.A. Goal Keeper Coaching	Tues	16:45-17:45	BL	T: Paul 07590 038234
Cubs (8-10 yrs)	Wed	18:30-20:00	OVH	T: Stuart 371268
S.E.F.K.A Karate (7-15 yrs)	Wed	19:00-20:00	GCSC	T: 371131/ 312427
Beavers (5 3/4 -8 yrs)	Thur	18:00-19:00	OVH	T: Stuart 371268
1st Cornard & Sudbury Guides	Thur	19:30-21:00	WHOS	T: Toni 07973913509
1st Great Cornard Brownies	Thur	17:45-19:15	WHOS	T: Linda 07551977388
Football Coaching, open age	Sat	10:15-11:15	BL	T: Paul 07590 038234
Kiddie Winks Football Club	Sat	11:30-12:30	BL	T: Paul 07590 038234

Sport & Exercise

Bootcamp	Mon	09:30-10:30	SC	T: Paul 07590 038234
Bootcamp	Mon	18:00-19:00	SC	T: Paul 07590 038234
Circuits	Mon	18:30-19:30	GCSC	T: 374861
Legs, Bums & Tums	Mon	19:30-20:30	GCSC	T: 374861
Group Cycling	Mon	20:30-21:15	GCSC	T: 374861
Burn & Tone	Tues	18:00-19:00	GCSC	T: 374861
CYK Kung Fu	Tues	19:30-21:00	SRC	T: 07815 412338
Bootcamp	Wed	09:30-10:30	SC	T: Paul 07590 038234
Legs, Bums & Tums	Wed	18:30-19:30	GCSC	T: 374861
Pilates	Wed	19:30-20:30	GCSC	T: 374861
Group Cycling	Wed	20:30-21:15	GCSC	T: 374861
Bootcamp	Wed	18:00-19:00	GCSC	T: Paul 07590 038234
S.E.F.K.A Karate (Seniors)	Wed	20:00-21:30	GCSC	T: 371131/ 312427
Bootcamp	Thur	18:00-19:00	SC	T: Paul 07590 038234
Callenetics	Thur	18:30-19:30	GCSC	T: 374861
Fitness Yoga	Thur	19:30-20:30	GCSC	T: 374861
CYK Tai Chi	Thur	19:00-20:00	SRC	T: 07815 412338
CYK Kung Fu	Thur	20:00-21:30	SRC	T: 07815 412338
Badminton (Mixed Improvers)	Thur	20:00-21:00	GCSC	T: Brenda 376957
Badminton (Ladies friendly)	Fri	09:00-10:00	GCSC	T: Brenda 376957
Bootcamp	Fri	18:00-19:00	GCSC	T: Paul 07590 038234
Pilates	Fri	21:00-22:00	GCSC	T: 374861
CYK Kung Fu	Sun	19:30-21:00	SRC	T: 07815 412338

Leisure

Bowls Club (Carpet to 21st Apr)	Mon & Wed	14:30	SC	T: Jerry 310268
American Line Dancing	Mon	19:30-21:00	SC	T: Jean 377343
Quilters	1st/3rd Mon	19:30	SC	T: Kate 378325
Sudbury Beer & Wine Circle	3rd Mon	20:00	RST	T: Vera 210837
Cornard Ladies Assoc	1st Tues	19:30-22:00	SC	T: Margaret 374519
Slimming World	Wed	09:30 & 19:30	SRC	T: 07971 921093
Knitting Group	Wed	09:00-12:00	SC	T: Sylvie 375558
Radio Club	2nd Wed	19:45	WHOS	T: Bryan 247893
Sudbury Flower Club	Thur	10:00	SC	T: Brenda 370032
Horticultural Society	3rd Wed	19:30	SC	T: Joy 373750
Bowls Club (Carpet to 21st Apr)	Fri	20:30	SC	T: Jerry 310268
RAOB Victory Lodge	Alternate Fri	20:00	SC	T: 07817 178631

Support Groups

Disabled & Self Help Group (DASH)	Tue & Thurs	09:30-12:30	SC	T: Nicola 379898
Success After Stroke (SAS)	Tues & Fri	09:30-12:00	SC	T: Viv 212233
Breathe Easy Group (Lung Conditions)	1st Wed	14:00-16:00	SC	T: 07971 290666
Sudbury Parkinson's Group	4th Wed	14:00-16:00	SC	T: 377188/282630
West Suffolk Autistic Society	1st Wed	17:45	Strikes	T: 07917 203433
MS Support Group	2nd Thur	10:30-12:30	SC	T: Pat 881490
But You Don't Look Ill (BYDLI)	2nd Thur	13:00-15:00	SC	T: Victoria 07950 436384
Sign Club Sudbury (Sign Language)	3rd Tues	19:00	SC	T: Jeanette 371842

Quiz answers

They are all letters in the 1957 international phonetic alphabet.

1. India 2. X-ray 3. Golf 4. Yankee 5. Romeo

THE GREAT BRITISH SUMMER FETE 2013!

With a promise (and a prayer!) the Gt Cornard Community Association had another resounding successful fete as many of the local residents felt that it was worth attending as the footfall was in excess of last year's, although there are no confirmed attendance figures at the time of going to press. Thank you for the support and praise that we have received saying "the village fete felt like it used to and it was good to see people from all generations enjoying the



afternoon", and another thank you from a mother of three children who stated that she would not have otherwise been able to afford to give her children an afternoon out without the kiddies corner. The Association much appreciates the comments, as it meant that the aim to achieve an enjoyable afternoon for all to participate has given everyone the "good feel factor". In turn the Association would like to thank every one of the volunteers who helped on yet another hot sunny day. Will we be so lucky another time, I wonder? Unfortunately there is no confirmed date for next year, for the moment.

The fete evented many traditional family favourites, with the ever popular Pet Zoo, Paul Pleasants with his Punch & Judy show, along with the new theme for children's games and competitions. The games had been scheduled to finish for around 4.30pm, but in fact were still being played and enjoyed through to 5pm! A proud winner was Saxson, who won an amazing collection of goodies! Unfortunately the children's competitions had a very low turn out, so another time it is hoped to see some promising young chefs; Jamie Oliver eat your heart out!!

The Dog Show was yet again another bundle of fun and wholly good spirited participated by the dogs, their owners and the Judges! There were over 49 entrants between 6 classes, which included Best in Show as the overall winner, well done to *Billie* and owner Ella Gillibrand. Some of the winners were *Strike*, winning Dog most like Owner, *Bella* for Fancy Dress, and Waggiest Tail won by *Billie* again! The guest judge was Simon Bailey from Ardmore Veterinary, who generously supplied the rosettes and prizes.



Other exhibitors and groups that participated that should be mentioned are:

- Diamond Lites Majorettes
- A brilliant jazz band
- The Girl Guides
- Karate
- Young Explorers for marshalling on the day
- The Friendship Dancers

Our warmest thanks to our sponsors, who without their support the fete would not be so successful:

Waitrose
Unite Branch LE/979
Great Cornard Charities
Great Cornard Parish Council
Ardmore Veterinary



The Great British Summer Fete was certainly feted by all on such a glorious sunny and very hot day, and very much the traditional event worth the visit, and for the Great Cornard residents to be proud of!

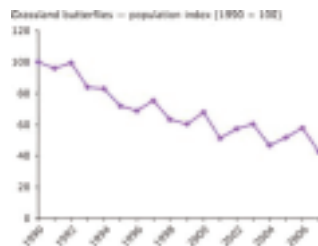
Please find The Great Cornard Community Association on facebook for future announcements:

Stephanie Atkinson

PLEASE HELP OUR WILDLIFE

Many species of wildlife - indeed most - continue to decline nationally and internationally and this results from the activities of just one other species - no prizes for guessing who. Human selfishness, ignorance and greed are destroying our wildlife at an ever increasing pace.

As a result of our assault on the natural world a few species are apparently doing better, on a temporary basis, for example: Magpies and Crows will feed on carrion (dead animals and birds) and sadly there is an ample daily supply of road kill. The Magpie and Crow however are very quick to move to safety when vehicles approach and are rarely victims of traffic. The Green Woodpecker



seems also to be on the increase, but at a cost to other grassland wildlife, it prefers to feed on short grass areas where ants make up a good proportion of its diet, but regularly mown grass as seen on the Northern Road Industrial estate, eradicates butterflies, bees and most other grassland invertebrates. Grassland butterflies mostly over winter as an egg or caterpillar and close mowing will obviously destroy them. Adult butterflies will not deposit their eggs on regularly mown grass because there is an insufficient amount of their food-plant remaining and no protection from predators such as the Green Woodpecker.



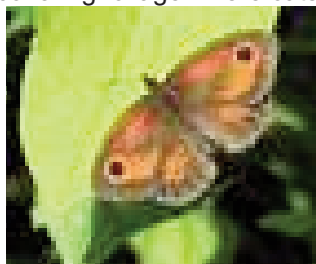
Unless there is real effort by people to help wildlife in their gardens and wherever possible in the wider countryside, the decline will continue with more local extinctions and many species isolated and confined to the small number of nature reserves and no longer present in the wider countryside.



I'm encouraged to think that ignorance rather than apathy is the major problem and most people are unaware of the needs and the habitats required by various groups of wildlife, so in this and subsequent articles I will offer advice that can be put into practice in your garden, field, farm or window box. This advice will generally be appropriate for the season in which it is published and will focus on species showing the most rapid decline or those known to be endangered; these would be B.A.P. species (Biodiversity Action Plan species) or a red listed bird species.



Many garden birds suffer hardship at this time with gardens being manicured or hard landscaped for car parking leaving no foraging areas, this and the lack of nest sites has resulted in the once common House Sparrow being red listed for more than a decade now. More recently the gregarious Starling has joined the Sparrow on the endangered list which is based on the rate of decline. Modern housing provides little or no access for these birds to nest so Sparrow Terraces (a three compartment elongated bird box) and Starling nest boxes, properly secured to a wall at least 2½ metres from the ground and well out of reach by cats, will help enormously. The lack of foraging areas now requires all-year-round feeding for birds, in fact, the consumption rate from garden feeders will probably treble over the next few weeks as parents struggle to feed their chicks. As cats take an enormous toll of birds and other wildlife, please position your feeders away from ground covering foliage where cats will lie in wait - in fact if you have free roaming cats in your garden (pedigree cats, for obvious reasons, are usually not allowed to roam) it is probably unwise to feed in your garden.



When cutting hedges, overgrown shrubs, ground foliage and that conifer, please, please check for birds' nests, the conifer will almost certainly have a nest or two. Although there is little effective enforcement of wildlife law it is an offence to destroy an active nest, and nobody in their right mind would want to.

Butterflies and bees are now in serious trouble, many modern, high coloured varieties of flowers provide little pollen or nectar, the old garden varieties are far better. Lavender and the creation of an herb garden will help bees and adult butterflies, for the caterpillars

however specific food-plants are required - for further information please call the number below.

George Millins.

Phone 01787 374874 Mobile 07534 263 629

CRUNCHY OAT COOKIES

Ingredients

75g Porridge Oats
50g Plain Flour
50g Margarine
1 Tbs Golden Syrup
½ Level Tsp Bicarbonate of Soda



Method

Mix the oats and flour together. Melt margarine, sugar and syrup gently over a low heat. Add in the soda and the flour and oats and mix well. Roll into walnut sized balls and place well apart on a greased baking tray. Bake at gas mark 4 350^f/180^C for 12-15 minutes. Cool slightly then transfer to a cooling rack till cold and crispy.

SUDBURY MODEL RAILWAY CLUB



The Sudbury Club was formed in 1980 and over the years its members have built their own individual layouts and eight club layouts to exhibition standards. At the present time there are five layouts that are on the exhibition circuit having received invitations to attend and display these at shows throughout the East Anglian Region.

Although the Club has never had a large membership, the members have a wide range of skills, which have been developed over time and incorporated into the layout designs. Members are enthusiastic and a few dedicated ones give up their time to operate the layouts at exhibitions.

The aims of the Club are to further the hobby of Model Railways by providing an opportunity for members to be involved in model construction. All skill levels are welcome and the Club provides an opportunity for members to swap ideas and information.

Club nights are held in Little Cornard Parish Hall on Friday evenings between 7:30 and 10:30pm- why not come and join our friendly members- you will be made most welcome.

If you want a preview of what we do and achieve come along to the annual exhibition the club is holding in St Peter's, Market Hill in Sudbury on Saturday 5th October 2013. There will be a number of operating exhibition layouts on display and an opportunity to purchase items from trade stands. Refreshments can also be purchased at very reasonable prices.

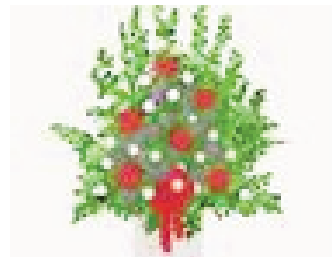
We are a non-profit making club with proceeds being used to provide materials for the club's future activities.



www.sudburymrc.org.uk

Peter Worton 01787 371758

SINGLE MUM HAS A GO



Earlier this year a single Mum from Rede Way aimed her sights on self-employment, seeking to provide affordable, bespoke floral tributes for the bereaved. The local press featured long-term unemployed Tracy Skinner and photographed her at Sudbury's Cancer Research UK shop, with Manager Lesley and long-standing volunteer Marilyn. Tracy has pledged to donate 5% of her earnings to the charity and, to date, she has contributed £37.50 in spite of being hindered by bureaucracy.

The long-term unemployed must attend government funded Seetec for employment and training opportunities. With her three sons nearly off her hands, Tracy took full advantage of their services. Her advisor, Rita, steered her towards her goal and Bereavement Bouquets (Cornard) was launched from the dining room of her house in Rede Way, where she has lived for almost 30 years. However, as is often the case with officialdom, the formalities in obtaining an enterprise allowance grant turned into a web of red tape and scuppered her plans for securing a small business location.

By the very nature of her business it is most difficult to progress without business premises, but if they so wish, she is willing to make the floral tributes in her clients own homes. She prides herself on personalised floral arrangements and encourages client involvement so that each tribute is as unique as the deceased. She is most sympathetic and will allow clients to construct their own personal floral tribute for their loved one, under her expert eye- for some this is a help at their time of loss.

Tracy can be contacted at: 59 Rede Way.
Telephone 01787 373134 or 07707720359 or
e-mail tracyskins@gmail.com

R SMITH ELECTRICAL SERVICES

ALL ELECTRICAL WORK UNDERTAKEN
CLEAN, HONEST, RELIABLE
PLEASE CALL RYAN ON;
07981 528 948 OR 01787 212352
www.rsmithelectrical.co.uk

Harcourt-Powell

Chartered Surveyors & Residential Letting Agents
Homebuyer Reports/Building Surveys & Valuations
Design, Planning & Building Regulations Approvals
Residential Lettings & Management



Tel: Sudbury **01787-881177**
www.harcourt-powell.co.uk



PROFESSIONAL
CLEANING

Danny's

Carpets

01787 882149

Rugs

0781 356 1987

Upholstery

FREE ESTIMATES

Est. 1994

Alpha Aerials

Aerial & Satellite Services

Installations & Upgrades
All FREEVIEW Compatible
Extensions / Multiroom

01787 829581 07766 544616

aerials@alphaservices.org.uk www.alphaservices.org.uk

Mark Newman

CORNARD SECONDHAND SHOP

WASHING MACHINES - DRYERS
FRIDGE-FREEZERS Etc.

All Household Furniture
House Clearance and Removals

26 Bures Road, Gt. Cornard, Sudbury

Tel: **01787 313819**

www.cornardsecondhandshop.co.uk

DB SECURITY LOCKSMITHS

24/7 Callout Service-Town Centre Premises
Locks Supplied & Fitted to Insurance Stds

Safes Supplied and Fitted
Free Security Surveys
Key Cutting - Lock Restoration
Union / Chubb Super Centre
ABUS Super Centre

Hamilton Road, Bus Station
Sudbury, CO10 2UU

01787 311511

Mob: 07966 882470-Website:www.db-security.co.uk

RH Plumbing & Heating Engineers

- * Bathroom installation
- * GAS & OIL BOILER SERVICING
- * NO JOB TOO SMALL!!
- * All plumbing & Heating work

Call Richard on:

07507157645
(01787) 881446



S W MAINTENANCE

SERVICE ENGINEER

FAST LOW COST SERVICE, INSTALLATION
AND REPAIRS TO:
ALL TYPES OF GAS AND OIL APPLIANCES
ALL HEATING FAULTS, PIPEWORK AND CONTROLS

29 YEARS OF EXPERIENCE

Phone **STEVE**
01787 378992



Reg No.
154355

A T Gillibrand & Sons

General Builders - Est 1966

EXTENSIONS
GARAGE & LOFT CONVERSIONS
ALL BUILDING WORK

01787 373622 or 07710 813705

22 Oriel Close, Great Cornard, CO10 0DF

THE FIVE BELLS

63 Bures Road, Great Cornard. CO10 0HU

Quality Ales & Home Cooked Food

Daily till 9.30pm-Sunday bookings advisable

Large Car Park, Beer Garden & Play Area

Friendly Family Atmosphere-Live Music-Free Wi-Fi

01787 379016 or www.5bells.me.uk